

Pressure Gauge for General Purpose/ With Limit Indicator

Series G46/GA46

RoHS



G46-10-02M-C

- Be sure to read the precautions on page 739 for selection and mounting.

Standard Specifications

Model		G46	GA46
Type		Back side thread	Vertical side thread
Port size ⁽¹⁾		R 1/8, R 1/4 (Option M: with M5 female thread)	
Fluid ⁽²⁾		Air	
Indication precision		±3% F.S. (Full span)	
Material	Case (Surface treatment)	Rolled steel (Electrodeposition coating black)	Stainless steel (Black melamine painted)
	Clear cover ⁽³⁾	Polycarbonate Part no.: G46-00-00-4	Polycarbonate Part no.: G46-00-00-3
	Stud (Surface treatment)	Aluminum die-casted (Black disulfide molybdenum coated)	Brass
	Bourdon tube	Brass	
Weight (kg)		0.05	0.075
Attachment:		C	Part no.: 1305104-1A
With cover ring assembly		C1	Part no.: 1305104-3A

Note 1) When mounting a pressure gauge, use caution not to tighten excessively. Excessive tightening will cause product to be damaged. Use a pipe tape for sealing. Recommended tightening torque: R 1/8: Set between 7 to 9 N·m, R 1/4: 12 to 14 N·m respectively.

Note 2) Not applicable to water as fluid because its stud is made from aluminum die-casting. Water may cause corrosion and block the air passage. Use G46-C-X3 pressure gauge with wetted parts stainless steel (wetted parts of G46-C-01M are made of brass and this become lightly corroded. Take precautions when using.) Design system to not be affected by water hammer when using water as fluid. Similarly, when using other fluids, please consult SMC for fluid compatibility information concerning corrosive potential.

Note 3) Clear cover: G46-00-00-4 is not compatible with G46-00-00-3.

Model (Standard)

Model	Pressure range ⁽¹⁾ MPa	Indication unit	Connection thread	Note	
G46-2-01/02	0 to 0.2	MPa	R 1/8, 1/4	—	
G46-4-01/02	0 to 0.4				
G46-7-01/02	0 to 0.7				
G46-10-01/02	0 to 1.0				
G46-2-01 to 02M	0 to 0.2				
G46-4-01 to 02M	0 to 0.4				
G46-7-01 to 02M	0 to 0.7				
G46-10-01 to 02M	0 to 1.0				
G46-10-01 to 02M	0 to 1.0		M5 (Female thread)		
GA46-10-01 to 02	0 to 1.0		R 1/8, 1/4		

Note 1) Do not apply pressure more than the maximum display pressure. This will cause a malfunction.

Model (Made to Order)

Other versions of this unit can be made on a Made-to-Order basis. Please consult with SMC for details, as delivery times may be extended.

Model	Pressure range ⁽¹⁾ MPa	psi	Indication unit	Connection thread	Note
G46-2-01 to 02-C/C1	0 to 0.2	—	MPa	R 1/8, 1/4	With cover ring assembly
G46-4-01 to 02-C/C1	0 to 0.4	—			
G46-7-01 to 02-C/C1	0 to 0.7	—			
G46-10-01 to 02-C/C1	0 to 1.0	—			
G46-2-01 to 02M-C/C1	0 to 0.2	—			
G46-4-01 to 02M-C/C1	0 to 0.4	—			
G46-7-01 to 02M-C/C1	0 to 0.7	—			
G46-10-01 to 02M-C/C1	0 to 1.0	—			
G46-P2-01 to 02-C-X30 ⁽²⁾	0 to 0.2	0 to 30	MPa, psi	R 1/8, 1/4	—
G46-P10-01 to 02-C-X30 ⁽²⁾	0 to 1.0	0 to 150			
G46-2-02M-X4	0 to 0.2	—			
G46-4-02M-X4	0 to 0.4	—			
G46-7-02M-X4	0 to 0.7	—			
G46-10-02M-X4	0 to 1.0	—			
G46-2-02M-C/C1-X4	0 to 0.2	—		M5 (Female thread)	Oil-free, With cover ring assembly
G46-4-02M-C/C1-X4	0 to 0.4	—			
G46-7-02M-C/C1-X4	0 to 0.7	—			
G46-10-02M-C/C1-X4	0 to 1.0	—			
G46-P2-01 to 02-C-X30 ⁽²⁾	0 to 0.2	0 to 30			
G46-P10-01 to 02-C-X30 ⁽²⁾	0 to 1.0	0 to 150			
G46-15-01 to 02	0 to 1.5	—	MPa	R 1/4	—

Note 1) Do not apply pressure more than the maximum display pressure. This will cause a malfunction.

Note 2) Under the New Measurement Law, products for overseas use only (SI unit type for use in Japan).

How to Order

Pressure gauge • **G** **46** - 10 - 01 - -

1
2
3
4
5
6

	Symbol	Description	①	
			Type	
			G46	GA46
			Back side thread	Vertical side thread
②	Max. display pressure	2	0.2 MPa	●
		4	0.4 MPa	●
		7	0.7 MPa	●
		10	1.0 MPa	●
		15	1.5 MPa	●
		P2 ⁽¹⁾	0.2 MPa, 30 psi	○ ⁽²⁾
		P4 ⁽¹⁾	0.4 MPa, 60 psi	○ ⁽²⁾
		P7 ⁽¹⁾	0.7 MPa, 100 psi	○ ⁽²⁾
		P10 ⁽¹⁾	1.0 MPa, 150 psi	○ ⁽²⁾
		P15 ⁽¹⁾	1.5 MPa, 220 psi	○ ⁽²⁾
③	Connection thread	01	R 1/8	●
		02	R 1/4	●
④	Option	Nil	—	●
		M ⁽³⁾	With M5 (Female thread)	●
⑤	Note 4) Attachment	Nil	Without cover ring assembly	●
		C	Clear cover has no protrusion. (Clear cover is removable.)	●
		C1	Clear cover has protrusion. (Clear cover is removable.)	●
⑥	Special specification	Nil	—	●
		X2	Stud parts Nickel plated	—
		X3 ⁽⁵⁾	Wetted parts stainless steel	●
		X4	Oil-free (Wetted parts degrease washing.)	●
		X30	Both MPa and psi	○ ⁽²⁾

Note 1) This symbol must be used with Special specification "X30."

Note 2) ○: Under the New Measurement Law, products for overseas use only (SI unit type for use in Japan).

Note 3) To use the pressure gauge with M5 (female thread), attach the joint when piping the tube. For combinations with the special specification products, please consult SMC separately.

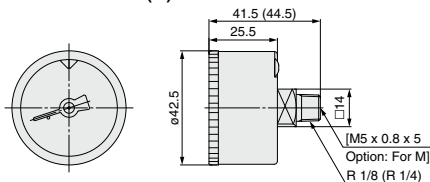
Note 4) For pressure gauges with the cover ring assembly, it is recommended to select the option M so as to perform the piping.

Note 5) Movable parts (gear, etc) inside pressure gauge are made of brass.

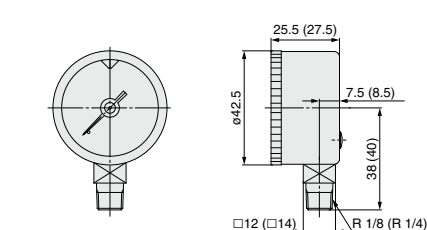
Dimensions (Except Made-to-Order products)

* The dimensions in (): Connecting thread R 1/4

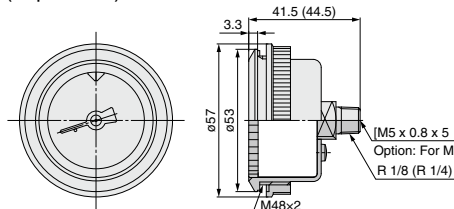
G46-□□-01 to 02 (M)



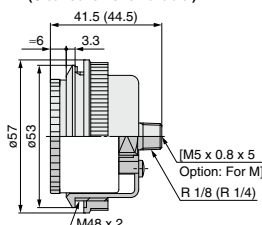
GA46-□□-01 to 02



G46-□□-01 to 02 (M)-C G46-□□-01 to 02 (M)-C1 With cover ring assembly (For panel mount)



Type C1 (Clear cover is removable.)



Panel fitting dimensions Plate thickness Max. 3.5t

